



C 06 K-10-HA

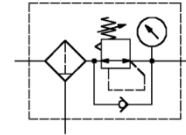


C 06 M

**Filter-regulator  
»multifix-mini«**
**Size 0**
**C 05**  
G 1/8

**C 06**  
G 1/4

5 µm


**Characteristics**

Type	C 05	C 06
Port	G 1/8	G 1/4
Pressure gauge port	G 1/8	
Type of construction	Diaphragm pressure regulator / self-relieving design / Centrifugal filter / Sintered filter element	
Input pressure p <sub>1</sub> max.	<b>single (independent) component: 16 bar</b> Multi-element unit: 12 bar	
Input pressure p <sub>1</sub> min.	1,5 bar	
Control range p <sub>2</sub>	<b>0,1-3 bar / 0,5-10 bar</b> 0,2-6 bar / 0,5-16 bar (option)	
Mounting position	vertical, drain valve at bottom	
Mounting typet	Bracket on the top, -hole circle Ø30,5 ;	
Medium temperature	-10 to 60 °C (other temperatur-	
Ambient temperature	-10 to 60 °C ranges on request)	
Filter rating	5 µm	
Bowl capacity	max. 16 cm <sup>3</sup> condensate	
Construction of drain valves	semi automatic, - <b>standard</b> equipment (HA4) - manual and fully autom. on request	
Weight [g]	280 / 360 incl. pressure gauger	

**Description**

- Modular principle
- Simple block mounting with other devices  
Connector sets (**KP 05**) are required, creating a unit assembly system
- Pressure setting can be locked by pushing the knob down
- Pressure entry in direction of marking (▶)
- Pressure gauge included
- Bowl guard (option) can be retrofitted without tools (plastic bowl KS 11 F required)

**Accessories**

Designation	Order.-No.
Nut M 30x1,5	R 11-55
Mounting bracket with nut R 33-55	MV 30
Joiner set	KP 05
Polycarbonate bowl	640/1
Metal bowl	640/11
Filter-element 5 µm	611.6.905
Plastic bowl / fully automatic drain valve	KS 11 F-A
Metal bowl / semi-automatic drain valve	641/11-HA
Metal bowl / fully automatic drain valve	640/11-A

**Variants**

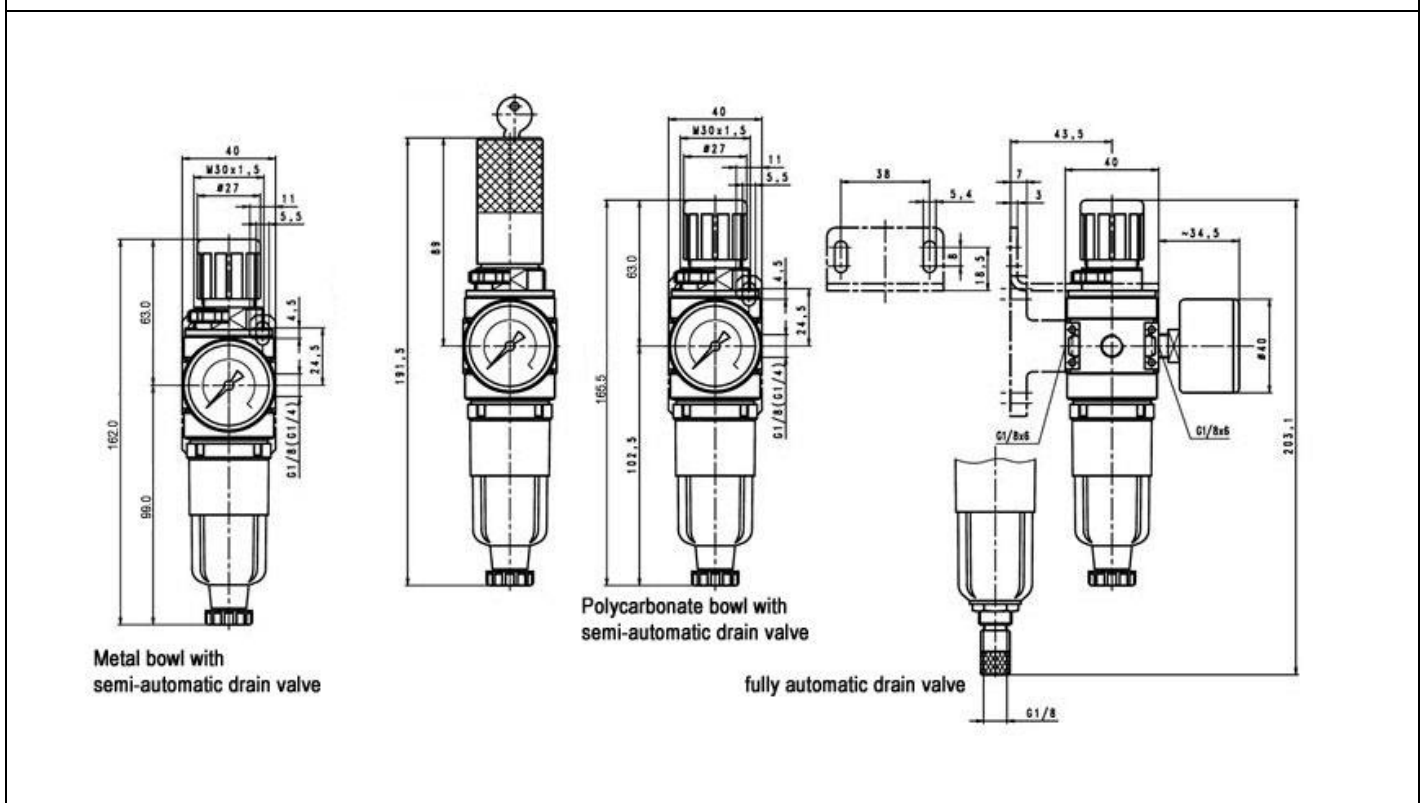
Order-No: = basic+addition

Basic	
C 05-=* Port G 1/8	C 06 * Port G 1/4
Variants	Addition
Control range 10 bar / plastic bowl / semi-automatic drain valve	* <b>K-10-HA</b>
Control range 3 bar / plastic bowl / semi-automatic drain valve	* <b>K-3-HA</b>
Control range 10 bar / plastic bowl / fully-automatic drain valve	* <b>K-10-A</b>
Control range 3 bar / plastic bowl / fully-automatic drain valve	* <b>K-3-A</b>
Control range 10 bar / metal bowl / manual drain valve	* <b>M</b>
Control range 10 bar / metal bowl / fully automatic drain valve	* <b>M-A</b>
<b>Ordering example:</b> Filter-regulator »multifix-mini« / port size G 1/4 / control range 10 bar / plastic bowl / semi-automatic drain valve	<b>Basic Addition</b> <b>C 06 K-10-HA</b>

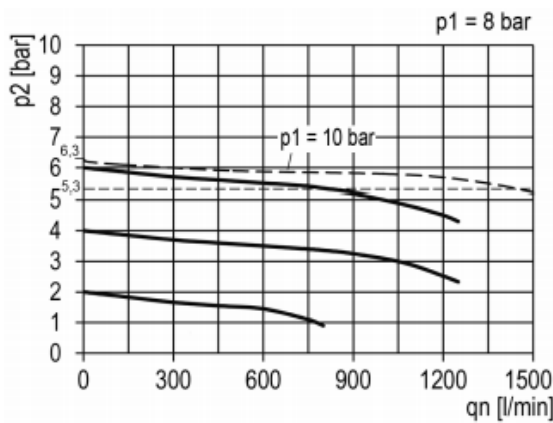
**Standards and directives**

97/23/EU (DGRL)	Extent of validity: §3, passage3 No marking (according to attachment II, Diagram2 true for § 3, passage 3)
ISO 4414	General rules and safety requirements for pneumatic fluid power systems and components used on machinery
RoHS	No validity

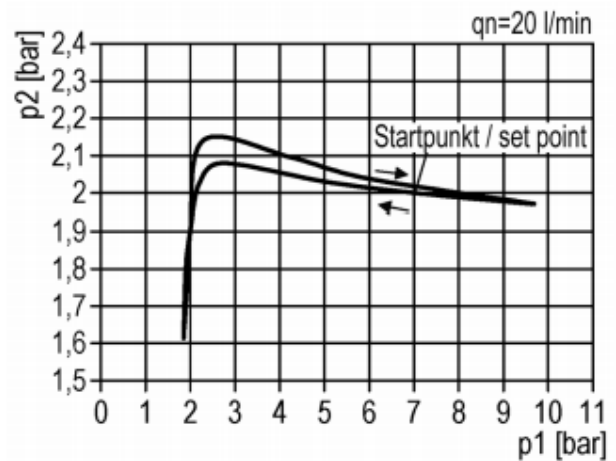
## Dimensions [mm]



## Flow rates



## Hysteresis



## Material

Component	Material
Head piece (body)	Z 410
Spring bonnet	POM-brass
Diaphragm	→ NBR-brass
Control spring	→ St. galvanised
Valve cone	→ NBR-brass
counter pressure spring	Stainless steel
O-ring 30x2	→ NBR
Spring bonnet lockable	POM-Al
Key cylinder	Brass
Filter-element 5 µm	Cellpor
Condensate bowl	Polycarbonate
Baffle/cone-channell	POM / PA6

## Main spare parts

Designation	Order-No.
Set of wearing parts	<b>22.1805.4</b>
Filter-element 5 µm	<b>611.6.905</b>