

# Unidirectional flow control valves

adjustable with slotted-head screwdriver

**PLUS**

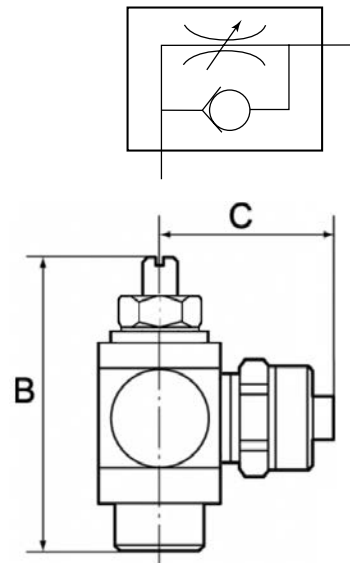
**Art. No. 106883**

**Type No. 357.018-6**

For throttling flow rates and regulating the piston speed of cylinders. Small dimensions, ideal for tight spaces. To be screwed directly into the valve or cylinder. The set flow rate can be locked via the lock nut in the version with knurled screw. The variants in banjo bolt construction can be rotated during assembly and are fixed after tightening. The variants with plug-in connector, rotated can also be rotated freely after assembly. The seals and lubricants used are silicone-free.



Exemplary illustration



## Technical data

|                    |   |
|--------------------|---|
| Operating pressure | 0 - 10 bar  |
| Temperature range  | -20 to 80 °C  |
| Body               | Nickel-plated brass   |
| Sealant            | NBR   |
| Captive seals      | Polyamide, glass fibre-reinforced (only parts in banjo bolt construction) |
| Silicone-free      | Yes   |
| Function           | Supply air throttle (V)   |
| Type of connection | Quick lock screw fitting  |
| Design             | Banjo bolt construction   |
| Thread             | G 1/8   |
| For hose           | 6 / 4 mm  |
| a/f                | 14 mm   |
| B                  | 32.0 mm   |
| C                  | 25.0 mm   |

## Commercial data

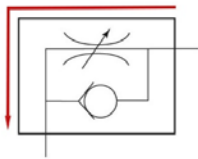
|                         |                  |
|-------------------------|------------------|
| Customs tariff number   | 84812090         |
| Country of origin       | IT               |
| eCI@ss 5.1.4            | 27292203         |
| eCI@ss 9.0              | 27292203         |
| UNSPSC_Code_v190501     | 40141603         |
| UNSPSC_CodeDesc_v190501 | Pneumatic valves |

## Material properties

|                            |                         |
|----------------------------|-------------------------|
| REACH SVHC1 substance name | lead                    |
| CAS no. SVHC 1             | 7439-92-1               |
| RoHS materials notice      | RoHS compliant          |
| REACH Info                 | contains SVHC substance |

## Markings for valve functions

### Supply air throttle



|                                |
|--------------------------------|
| Marking<br>(alphabetical code) |
| V                              |